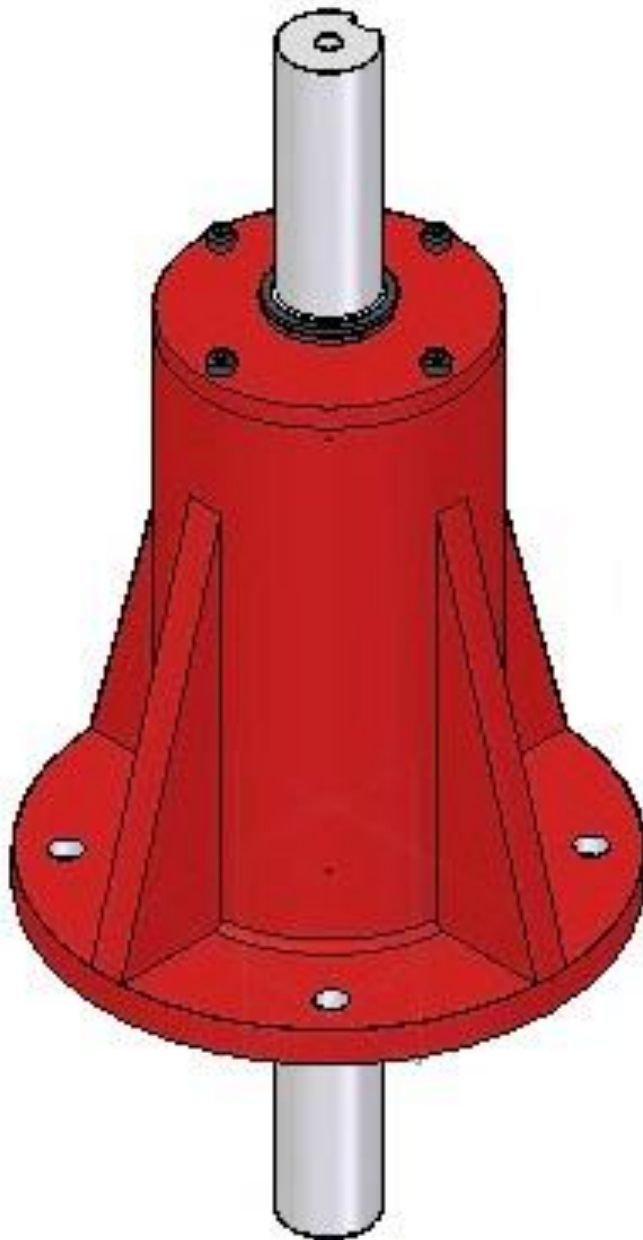


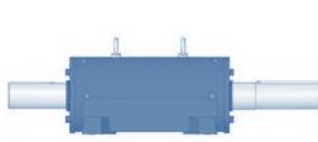
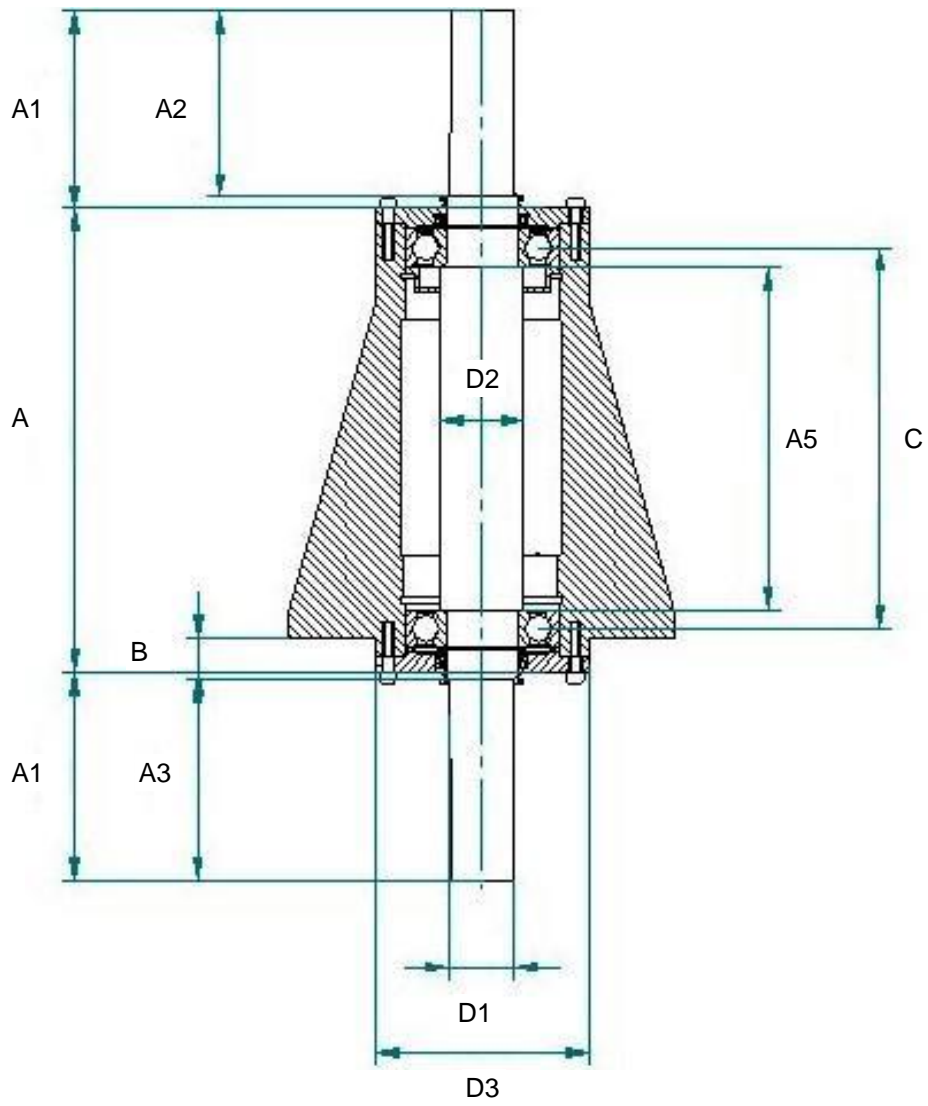
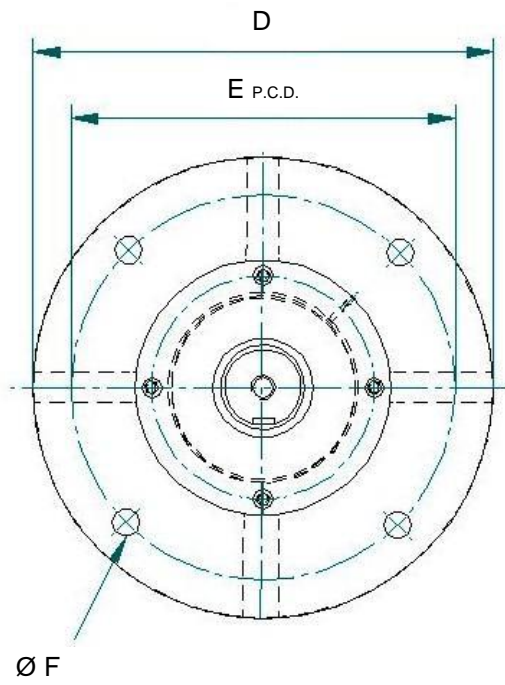
**wide range engineering**

**VWRB GREASE LUBRICATED VERTICLE DUAL  
BEARING HOUSINGS  
FOR USE WITH MOST FAN AND VERTICLE  
APPLICATIONS**



**VWRB Grease Lubricated Vertical Bearing Housing**



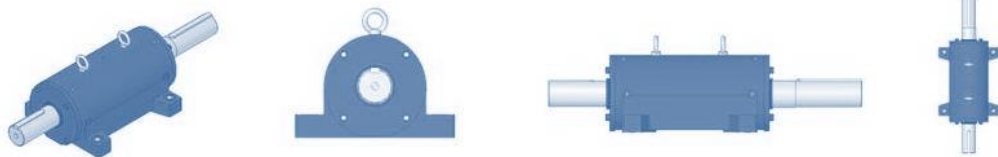
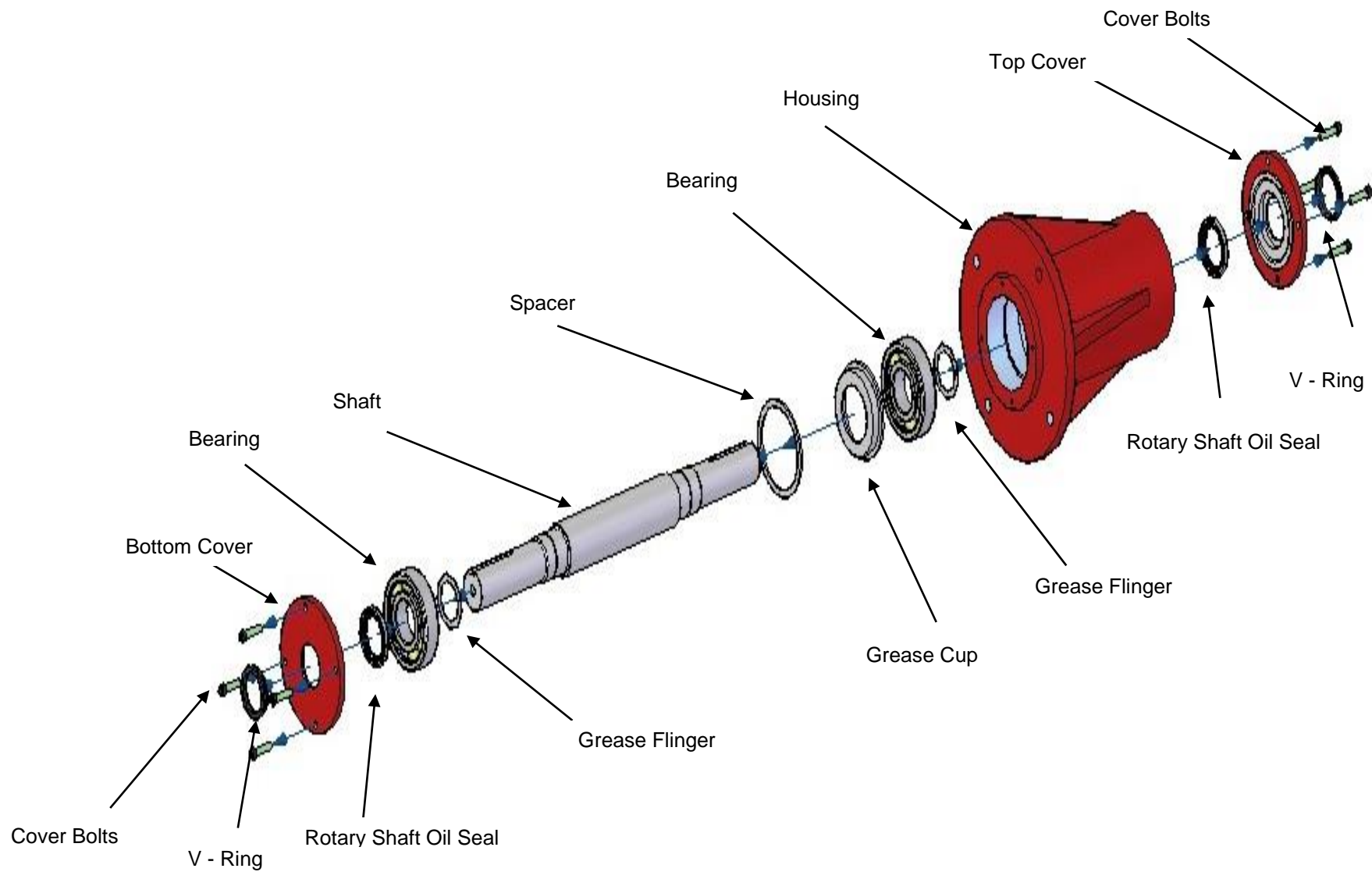


## Dimension Table

Designation	Bearing	Mass	D1	D2	A	B	C	D	D3	E	F	A1	A2	A3	A4	A5	Max Limiting Speed rpm
VWRB 25 BB VWRB 25 RB	6306-6306 6306-NU306	20 20	25 25	40 40	206 206	21 21	153 153	185 185	105 105	145 145	14 14	89 89	124 124	83 83	118 118	134 134	13000 12000
VWRB 38 BB VWRB 38 RB	6308-6308 6308-NU308	25 25	38 38	50 50	252 252	21 21	195 195	210 210	120 120	165 165	15 15	109 109	154 154	102 102	148 148	184 184	11000 9500
VWRB 50 BB VWRB 50 RB	6311-6311 6311-NU311	55 55	50 50	65 65	361 361	27 27	296 296	300 300	166 166	240 240	18 18	174 174	234 234	167 167	227 227	259 259	8000 7000
VWRB 65 BB VWRB 65 RB	6314-6314 6314-NU314	90 90	65 65	85 85	413 413	32 32	336 336	350 350	200 200	300 300	22 22	206 206	276 276	197 197	267 267	293 293	6300 5600
VWRB 75 BB VWRB 75 RB	6316-6316 6316-NU316	130 130	75 75	95 95	466 466	35 35	385 385	400 400	225 225	335 335	22 22	235 235	305 305	225 225	266 266	338 338	5300 5000
VWRB 90 BB VWRB 90 RB	6319-6319 6319 – NU319	210 210	90 90	110 110	515 515	40 40	430 430	460 460	250 250	360 360	25 25	270 270	350 350	258 258	338 338	377 377	4500 4300

**Please note: Normal operating speed should not exceed 0.8 of maximum limiting speed**





## VWRB Grease Lubricated Housings

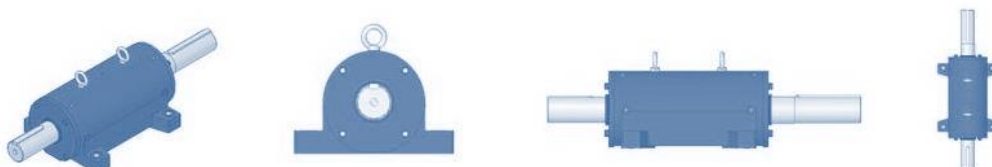
VWRB Grease Dual Fan Housings were originally designed for vertical bearing arrangements, but is suitable for various similar applications.

VWRB Grease Dual Fan Housings are one piece housings with two bearing seats that are accurately concentric, eliminate the risk of misalignment and promotes smoother and better running accuracy.

VWRB Grease Dual Fan Housings are normally designed to suit two deep groove ball bearings, but other bearing arrangements like, cylindrical roller, angular contact and spherical roller bearing arrangements are also available. The variation of arrangements is literally endless.

VWRB Grease Dual Fan Housings bolt down on to the support surface by means of four bolt holes. The covers are bolted on with cap screws or countersunk screws depending on the application. The rotation direction is indicated on the side of the housing by means of a red arrow if a Sprag Clutch (Holdback) is used.

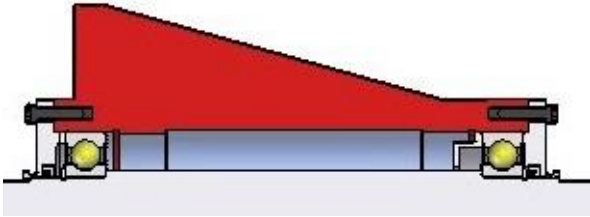
VWRB Grease Dual Fan Housings are also supplied as a sub assembly, all the components are supplied loose except for the shaft that is excluded. All components can be purchased separately and assembled. We however do not recommend this as we have trained qualified personnel that assemble these units every day. Units not assembled by us will have no Warrantee.



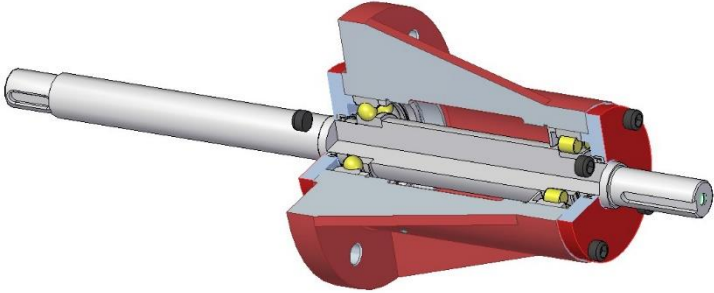
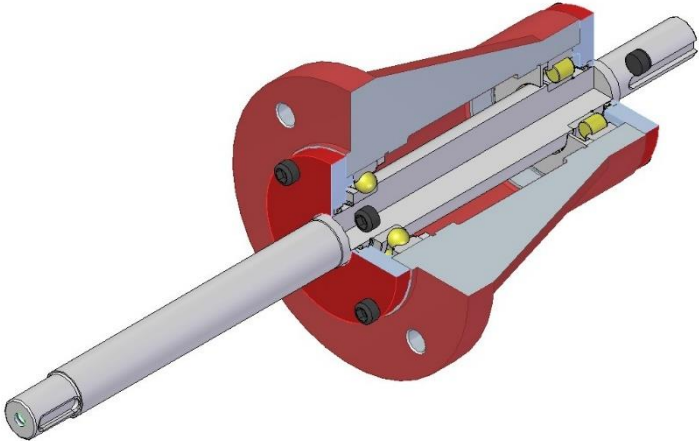
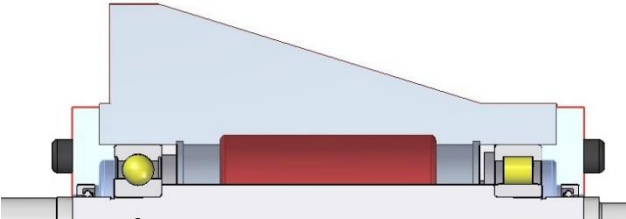


# Different Bearing Arrangements

BB Design



RB Design



# VWRB Grease Lubricated Housing Features

## Interchangeability

Boundary dimensions are in accordance with most popular types, therefore, no design changes to equipment or existing drawings are necessary.

## Low Vibration

The two bearing seats are concentric. Bearing misalignment is eliminated. This allows for a high degree of running accuracy and high speeds with very low vibration levels.

## Low noise level during operation and Efficiency

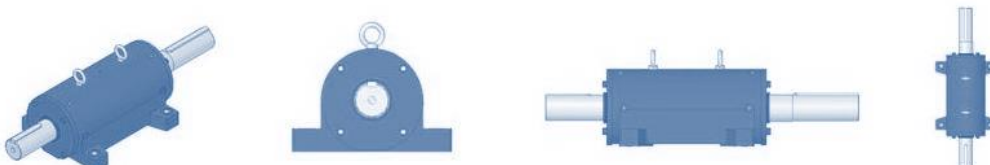
The accurate alignment in the VWRB grease lubricated housing ensures quiet operation it also more energy efficient.

## Ready to Install

All units are factory bench tested and supplied complete filled with grease and fitted with keys. The unit can be installed and run immediately.

## Lubrication

The housing will be pre-packed with grease on arrival. Please follow the re-lubrication recommendation details supplied on the Table or label supplied with the housing. The Label will indicate the type and amount of grease used during assembly. Grease nipples must be used to re-lubricate the unit at the correct intervals. Only use the specified grease or a compatible equivalent.





# VWRB Grease Lubricated Housing Features

## Sealing

The use of neoprene spring loaded lip seals in conjunction with V-rings ensures maximum protection against the ingress of moisture and foreign matter. A deflector disk can be fitted outside the cover on the shaft in the place of the V – Ring seal to deflect any contamination during operation. A Labyrinth sealing arrangement can also be fitted for extremely dirty conditions.

## Easy handling and Installing

All VWRB dual bearing housings are fitted with two eye bolts for safe handling.

## Probe Drilling

All VWRB dual bearing housings are drilled for temperature and Vibration probes on both sides of the housing for easy access. Any special drilling can be done before assembly.

## Painting

As a standard all VWRB dual bearing housings are supplied painted with red oxide if no paint specification is not specified.

## Bearing Options

Standard units i.e. type BB are fitted with two deep groove ball bearings, but options involving angular contact and roller bearings are available depending on the application.



# VWRB Grease Lubricated Housing Mounting

## Mounting

VWRB grease housings must be mounted correctly. Using the correct tools is essential. Ensure that the base where the housing is going to be mounted on is perfectly flat and clean before mounting.

## Mounting the VWRB unit

Installing the VWRB grease units is a simple operation. The unit just needs to be bolted to the support surface with four bolts. The coupling half or pulley and the impeller normally gets fitted ahead of time. When fitting the coupling half, pulley or impeller make sure that the shaft is properly supported, especially the pressing these components on the shaft to avoid damaging the bearings. Please ensure that the unit is securely fastened to the base and that the bolts are torqued to the correct Torque specifications.

Please ensure that if the unit is not installed immediately and used as a spare or stored for later installation the unit should be kept out of direct sunlight and the shaft should be rotated on a regular basis to avoid damage to the bearings and seals. A rotation roster can be obtained from WRE to ensure that this is being done on a regular basis.

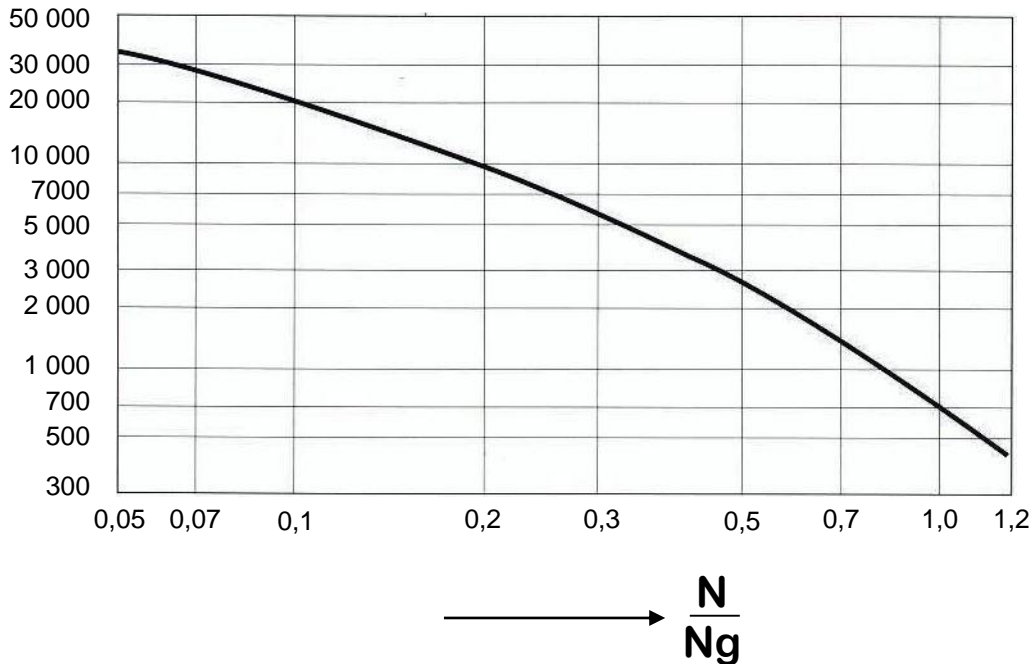
If the unit is mounted correctly trouble free operation will be achieved for many years.

Mounting instructions are available on request.



# Lubrication Chart

RE-LUBRICATION FREQUENCY



**N = Actual operating speed**  
**N<sub>g</sub> = Limiting speed of bearings**  
**T = Re-lubrication frequency in hours**

**Please Note: Above recommendations apply to normal ambient conditions.**

**For extreme temperatures a special recommendation is necessary.**

***Please consult Wide Range Engineering.***



**722 / I-1200 FLANGED • BND SOLID TYPE • SPA / THDS / TH / THM TAKE UP • SN / SSN / SNH / SNU / FSN / SAF / SD / SDAF / SDJC / SDG PLUMMER BLOCKS • TRUNNION MILL / BALL MILL / ROD MILL / PINION / SHEAVE WHEEL / DIFFUSER HEAD SHAFT / SHREDDER / CANE KNIFE / SHAKER SCREEN / DRAGLINE / DAVIDSON HOUSINGS • WFO OIL BATH PLUMMER BLOCK • WRB DUAL FAN GREASE & OIL LUBRICATED / VWRB VERTICAL / MAJAX / DINGLER / CODELCO • TVN HANGER • MANIFOLD SUPPORT • PRE STRESS BOLTS / NUTS & STOOD • OIL INJECTION ADAPTER SLEEVES • TS LABYRINTH / TACONITE SEALS • END DISKS / LOCATING RINGS • HYDRAULIC NUTS / PUMPS & ACCESSORIES • FABRICATION OF HOUSINGS & COMPONENTS • GENERAL ENGINEERING.**

For more information please contact us on:

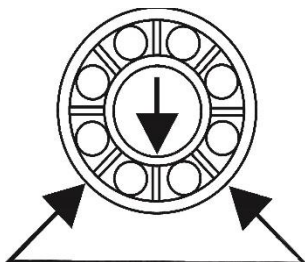
Tel: +27 (0) 11 974 0852

Fax: +27 (0) 11 974 0034

E-mail: [sales@wre-eng.com](mailto:sales@wre-eng.com)

[technical@wre-eng.com](mailto:technical@wre-eng.com)

[www.wre-eng.com](http://www.wre-eng.com)



**wide range engineering**

© Copyright wide range engineering 2015

The contents of this publication are the copyright of the publisher and may not be reproduced (even extracts) unless permission is granted. Every care has been taken to ensure the accuracy of the information contained in this publication but no liability can be accepted for any loss or damage whether direct, indirect or consequential arising out of the use of the information contained herein.

