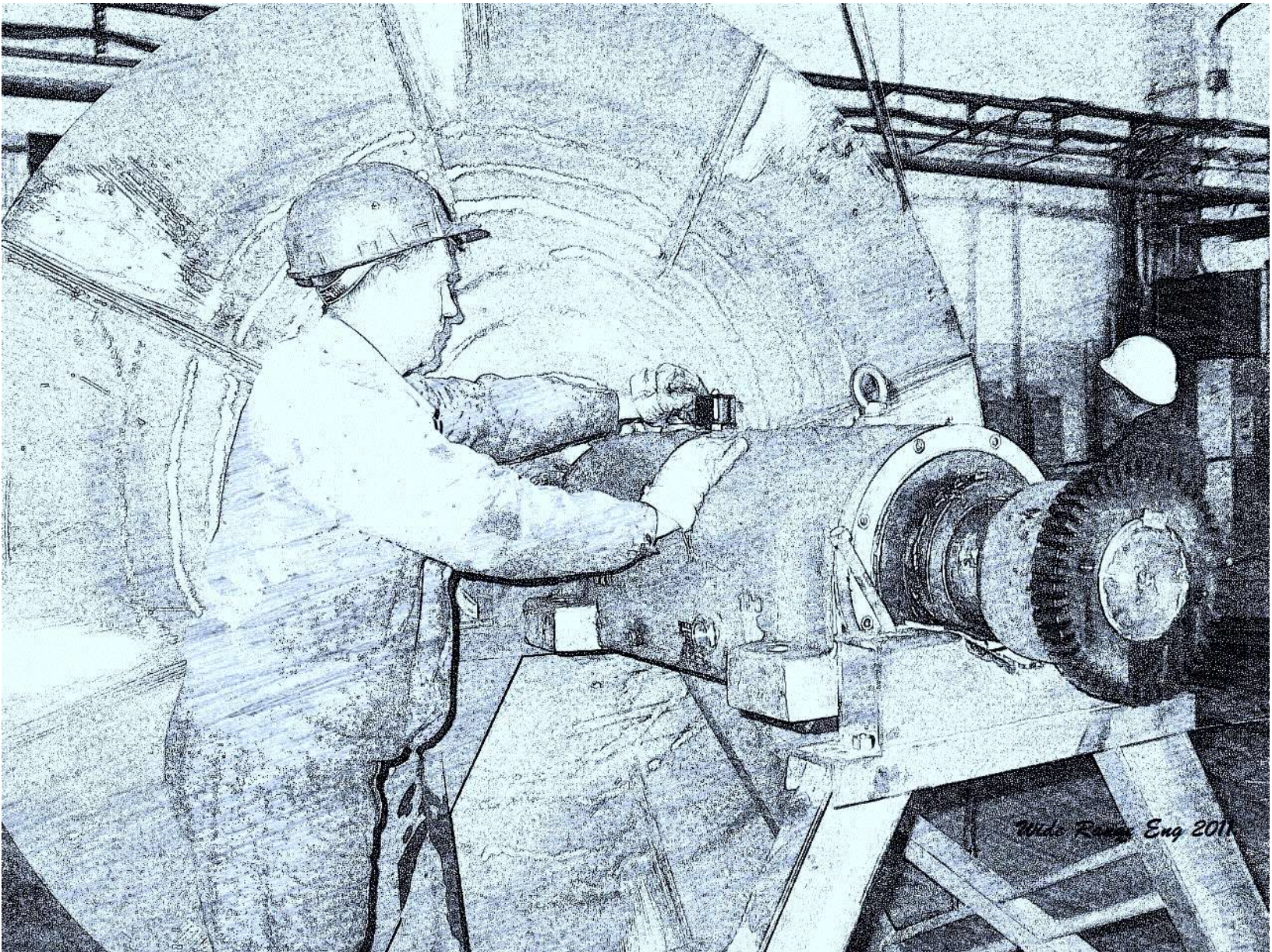


wide range engineering

General Product Information



**SPECIALISING IN ROLLING BEARING HOUSINGS & BEARING
APPLICATION ENGINEERING**

CONTENTS

	Page
WRE Company Profile	2
Introduction to WRE Standard Product Range	3
Grease Lubricated Plummer Block Housings	4
BND Solid Type Grease Lubricated Housings	5
SPA / THDS Take Up Housings	6
WFO Oil Bath Lubricated Plummer Block Housings	7
WRB and VWRB Grease and Oil Bath Dual Fan Housings	8
722 Flanged Bearing Housings	9
Various Housings Manufactured by WRE	10

Wide Range Engineering Company Profile

Since its inception, Wide Range Engineering has been involved primarily in the area of applied technology in the field of application engineering in rolling bearings. This includes the supply of precision components as well as the bearings and associated components.

Our expertise lies in the field of design to specification and problem solving of bearing and housing related applications. We design and supply market standard products, in addition to that, we also supply and design specialized bearing housings i.e. high speed oil bath plummer block and dual fan housings which are capable of solving speed related problems, and the problem of lightly loaded spherical roller bearings.

Our design center draws on many years of experience both in bearing applications as well as associated components. Drawings are constantly upgraded for improvements and our number of designs are constantly being added to.

We work in close liaison with a number of reputable foundries covering material from aluminum and brass to cast iron, S G iron and cast steel. Many hundreds of patterns of existing designs are housed at our premises.

We pride ourselves on having close working relationships with machine shops which have top-flight reputations for quality work with timeous deliveries. Capacity of these shops comes from center lathes, CNC lathes, horizontal mills, vertical mills and precision grinders. All the shops have specialized skills in various areas. Inspection of components and assembly work is carried out on our premises, by qualified personnel and according to ISO 9002 regulations.

Introduction to WRE Standard Products.

We have a standard range of products that we manufacture and even keep some stock of. This range of products are manufactured in South Africa to the highest quality for the South African and also exported to the International market.

Most of our housings are cast from S.G. Iron Grade 42 we also cast in S.G. Iron Grade 50, Cast Steel Gr BS 3100A2, Aluminium & Phosphor Bronze.

WRE manufacture the complete range of SN, SSN, SAF, SD, SDAF, SDJC, SDG Plummer block housings and we supply them complete with TS Labyrinth Seals and locating rings. We also do Temperature and Vibration Drilling as a standard on all Housings.

BND Solid Type Housings typically used for conveyor pulleys. Interchangeable with the SBND.

SPA Take Up Housings are typically used for tensioning of conveyor head and tail pulleys. Interchangeable with THDS Take Up Housings.

WFO Oil bath Lubricated Plummer block housings are mainly used on fan applications. Replacement for the SOFN, HFO, LOE, GOS Housings.

WRB and VWRB Grease and Oil bath Lubricated Dual Fan Housings. Typically they are used on fans with an over hung impeller to avoid under loading of bearings. Replacement for the PDN, VRE, VOS, ZLG.

722 Flanged bearings housing. The smaller range is triangular 3 bolt hole and the larger range is square four bolt hole.

WRE manufacture a wide range of non-standard housing for O.E.M customers for example: GEA, I.M.S. Eng, Howden Group, Donkin Fans, Actom Mechanical Equipment, CFW Industries, DB Thermal, Outotec, New Concept Projects, ThyssenKrupp, Ran Blower, Fer-Min-Ore, Humboldt Wedag, Bosworth, Thermal Energy Systems (Australia). These are only some of our O.E.M Clients. We also manufacture and re-design housings for all the major bearing suppliers.

Grease Lubricated Plummer Block Housings

WRE manufacture the complete range of SN, SSN, SAF, SD, SDAF, SDJC, SDG Plummer block housings and they are supplied complete with TS Labyrinth Seals and locating rings. Temperature and Vibration Drilling is done as a standard on all Housings. All housings are cast in S.G. 42 unless otherwise requested. All housings are supplied with TS Labyrinth seals as standard, but Felt, U Lock, end disks and Taconite seals are also available for all plumber block housings.

SN & SSN 500 & 600 Series

SN & SSN 200 & 300 Series

SN & SSN 3000 & 3100 Series

SNU / SNA 500 & 600 Series

SAF 509 – 544 Series

SAF 609 – 640 Series

SD 3100 Series

SD 500 Series

SD 600 Series

SD 3000 Series

SD 3100 Series

SDAF 500 – 600 Series

SDAF 200 – 300 Series

SDAF 230K Series

SDJC 3100 Series

SDJC 3200 Series

SDG 2200 & 2300 Series

SDG 3100 & 3200 Series

WCSD 3100 & 3200 Series



BND Solid Type Grease Lubricated Housings

These BND non-split bearings are typically used in high load applications. They are designed to suit 222, 230, 231 and 232 Series Spherical Roller Bearings with and Adapter sleeve, in some special cases parallel Spherical roller bearings can also be used. They are cast in S.G. Iron Grade 42 and is supplied in the following arrangements:

KAL or KAF:

K = Taper Spherical Roller Bearing with Adapter sleeve.

A= 1 x End Cover, 1 x Thru Cover, 1 X Labyrinth Ring, 1 x Spring Ring.

L= Non Located

F= Located

Or

KBL or KBF:

K = Taper Spherical Roller Bearing with Adapter sleeve.

B= 2 x Thru Covers, 2 X Labyrinth Rings, 2 x Spring Rings.

L= Non Located

F= Located

A Taconite Sealing Arrangement is also available on request.
Sizes Range from shaft diameter 80mm to 400mm.



SPA Take Up Grease Lubricated Housings

The SPA Take Up Housing is a non-split housing typically used on the head or tail pulleys of conveyor systems to tension the belt. They are designed to suit 222, 230, 231 and 232 Series Spherical Roller Bearings with an Adapter sleeve. They are cast in Cast Steel Gr. BS 3100A2 and is supplied in the following arrangements:

KAL or KAF:

K = Taper Spherical Roller Bearing with Adapter sleeve.

A = 1 x End Cover, 1 x Thru Cover, 1 X Labyrinth Ring, 1 x Spring Ring.

L = Non Located

F = Located

Or

KBL or KBF:

K = Taper Spherical Roller Bearing with Adapter sleeve.

B = 2 x Thru Covers, 2 X Labyrinth Rings, 2 x Spring Rings.

L = Non Located

F = Located

A Taconite Sealing Arrangement is also available on request.
Sizes Range from shaft diameter 50mm to 400mm.



WFO Oil Bath Lubricated Housings

The WFO Oil bath Lubricated Plummer block housing is mainly used on fans where grease lubricated housings are limited by their speed capability. These housings have a sump and are lubricated by means of a splash method. An oil ring flings the oil in the housing as it rotates to lubricate the bearing. They are designed to suit 222, 230 and 231 Series Spherical Roller Bearings with and without Adapter sleeve. They are cast in S.G. Iron Grade 42. WRE manufacture a WFO 2, 5 and a 4 Series. A lab seal arrangement is also available for very dirty environments. They are supplied in the following arrangements:

KAL/F:

K = Taper Spherical Roller Bearing with Adapter sleeve.

A= 1 x End Cover, 1 x Thru Cover, 1 X Shaft Sleeve, 1 x Oil Seal.

L= Non Located

F= Located

Or

KBL/F:

K = Taper Spherical Roller Bearing with Adapter sleeve.

B= 2 x Thru Covers, 2 X Shaft Sleeves, 2 x Oil Seals.

L= Non Located

F= Located



WRB / VWRB Grease & Oil Bath Lubricated Housings

The WRB Grease & Oil bath Lubricated dual fan housing assembly is mainly used on fans where there is under loading in fans with an overhung impeller using spherical roller bearings. These housings come complete ready to install. They are cast in S.G. Iron Grade 42. WRE manufacture from a 12mm to 360mm shaft extensions. The standard shaft material is BS970 080, but we can do Stainless Steel, EN 19, EN 24 with various conditions etc. A lab seal arrangement is also available for very dirty environments.

The VWRB is a Vertical Dual Fan Housing Assembly. Same principle as the WRB just in Vertical orientation.

They are supplied in the following arrangements:

BB:

B = Deep Groove Ball Bearing X 2

RB:

R = Cylindrical Roller Bearing X 1

B = Deep Groove Ball Bearing X 1

RRB:

R = Cylindrical Roller Bearing X 2

B = Deep Groove Ball Bearing X 1

ACR:

AC = Angular Contact Bearings X 2

R = Cylindrical Roller Bearing X 1

RSR:

R = Cylindrical Roller Bearing X 1

SR = Spherical Roller Bearing X 1



722 Flanged Bearing Housings

The 722 Flanged bearing housing is mainly used with self-aligning ball and Spherical Roller bearings. They are designed to suit 12, 22 and 222 Series Bearings with an adapter sleeve. They are cast in S.G. Iron Grade 42. WRE manufacture an A and a B type configuration. For example: 722510 A and 722510 B.

722 = Flanged Bearing Housing.

510 = 45mm shaft dia = (1210K, 2210K or 22210K)

A = End cover arrangement.

B = Thru Cover arrangement.

We keep the complete range in stock. Every 722 unit is supplied with the Following components: Housing, end or thru cover depending on the configuration, felt seal and a locating ring.



Various Housings Manufactured by WRE

Being a manufacturer of rolling bearing housings WRE can manufacture any housing available and those that have been discontinued. Often a sample or a drawing of a housing that was supplied many years ago by a company that doesn't exist anymore is brought to us. We then design a new housing with a new sealing arrangement. We also refurbish larger housings. Sometimes cost is a major factor and then refurbishment is the only option. The procedure for repair is normally to do a visual inspection, then to shot blast the housing. A Crack test is then done on all the critical areas. If the housing passes the crack test skimming and re-boring the housing and bring it back to the original tolerance would be the final step.

Here are some examples of Non-standard and refurbished housings.



**722 / I-1200 FLANGED • BND SOLID TYPE • SPA / THDS / TH / THM TAKE
UP • SN / SSN / SNH / SNU / FSN / SAF / SD / SDAF / SDJC / SDG
PLUMMER BLOCKS • TRUNNION MILL / BALL MILL / ROD MILL / PINION /
SHEAVE WHEEL / DIFFUSER HEAD SHAFT / SHREDDER / CANE KNIFE /
SHAKER SCREEN / DRAGLINE / DAVIDSON HOUSINGS • WFO OIL BATH
PLUMMER BLOCK • WRB DUAL FAN GREASE & OIL LUBRICATED /
VWRB VERTICAL / MAJAX / DINGLER / CODELCO • TVN HANGER •
MANIFOLD SUPPORT • PRE STRESS BOLTS / NUTS & STUOL • OIL
INJECTION ADAPTER SLEEVES • TS LABYRINTH / TACONITE SEALS •
END DISKS / LOCATING RINGS • HYDRAULIC NUTS / PUMPS &
ACCESSORIES • FABRICATION OF HOUSINGS & COMPONENTS •
GENERAL ENGINEERING.**

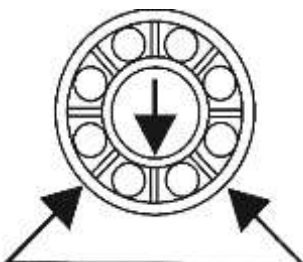
For more information please contact us on:

Tel: +27 (0) 11 974 0852

Fax: +27 (0) 11 974 0034

E-mail: sales@wre-eng.com

www.wre-eng.com



wide range engineering

© Copyright wide range engineering 2015

The contents of this publication are the copyright of the publisher and may not be reproduced (even extracts) unless permission is granted. Every care has been taken to ensure the accuracy of the information contained in this publication but no liability can be accepted for any loss or damage whether direct, indirect or consequential arising out of the use of the information contained herein.