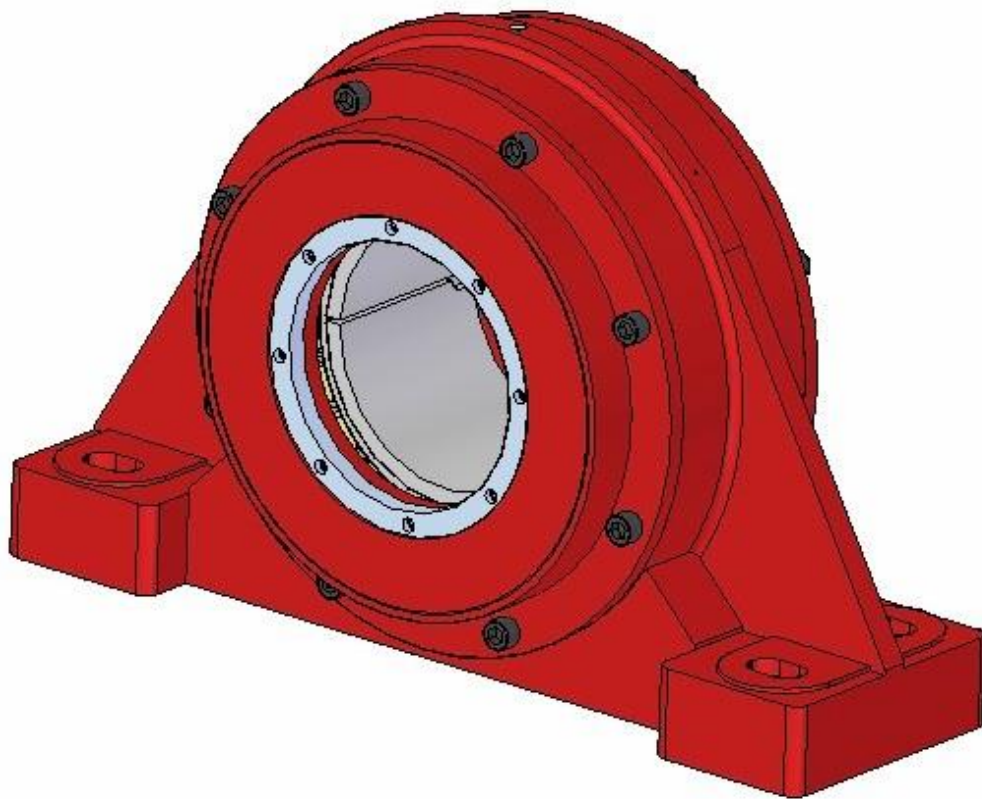


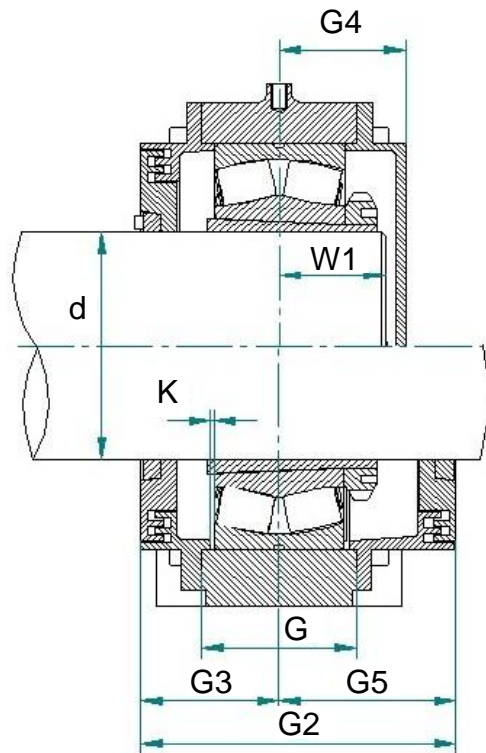
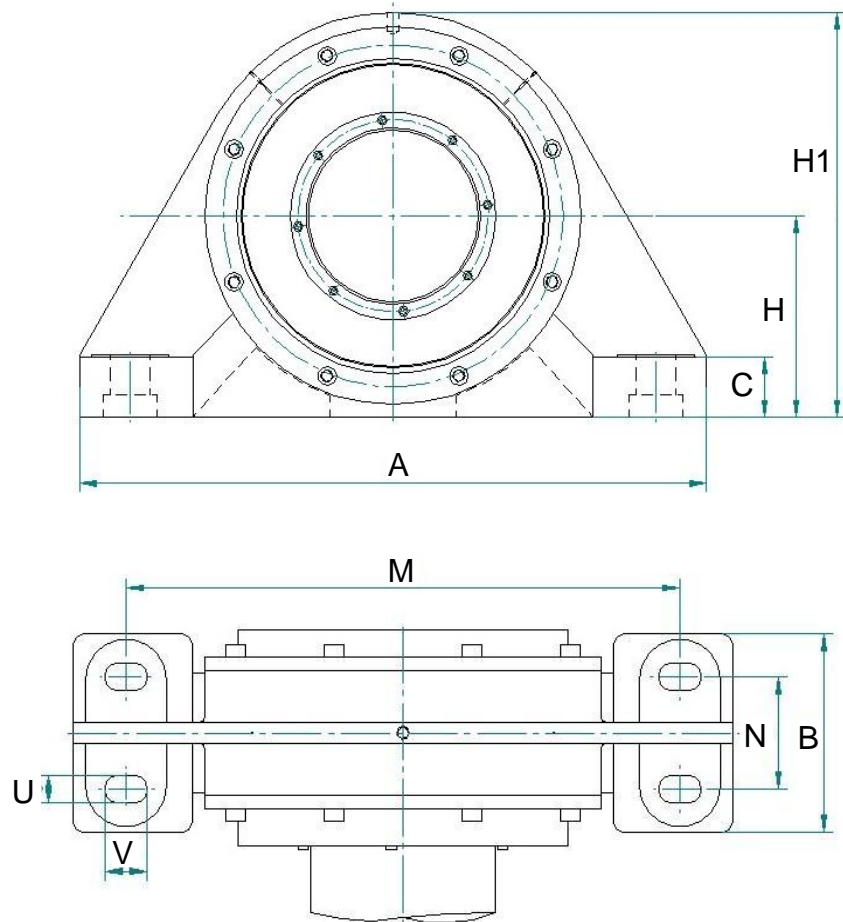
**wide range engineering**

**BND TYPE SOLID BEARING HOUSINGS  
FOR USE WITH SPHERICAL ROLLER BEARINGS  
MOUNTED ON TAPER ADAPTOR SLEEVES.**



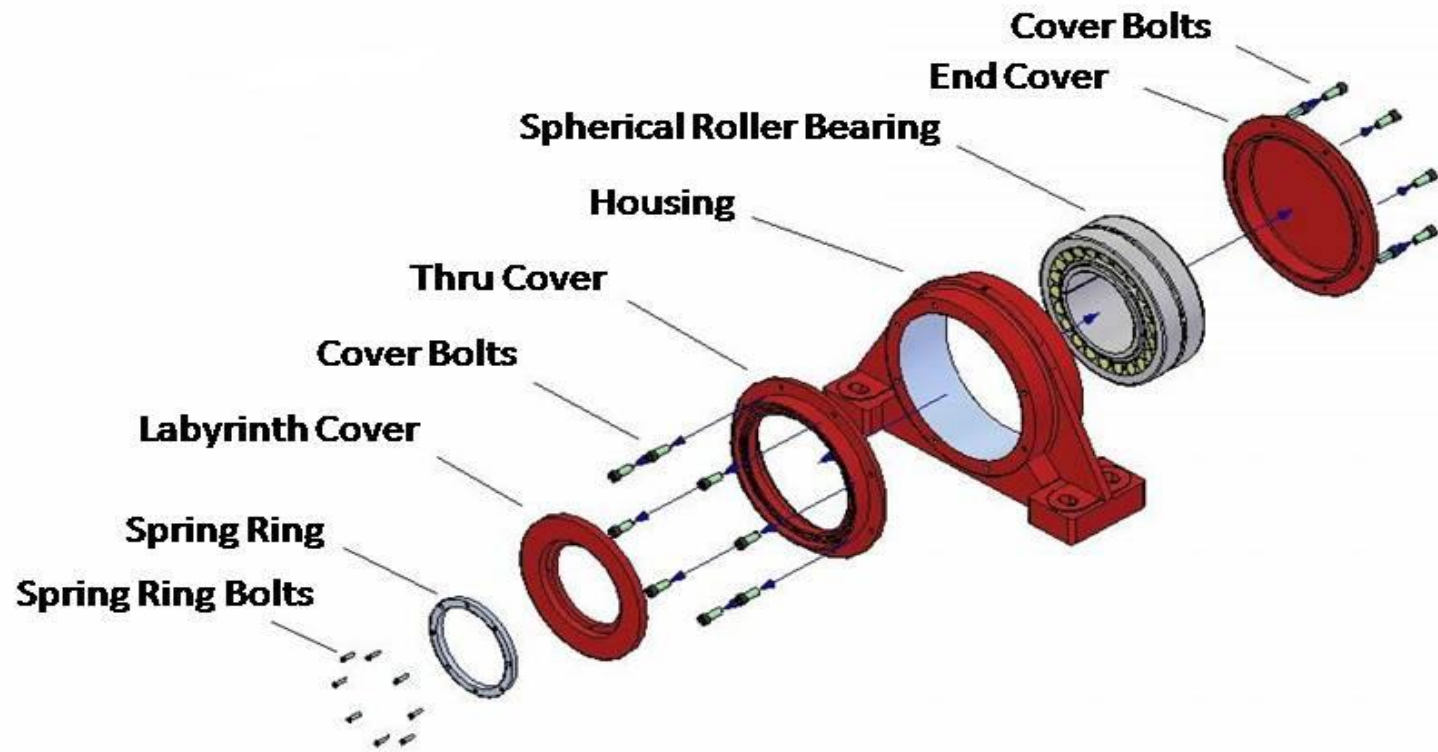
**BND Solid Type Bearing Housings**





Shaft Dia. d	Designation	Spherical Roller Bearing	Adapter Sleeve	Mass Housing	W1	A	B	C	G	G2	G3	G4	G5	H	H1	K	M	N	U	V
80	BND 2218	22218K	H318	45	42	370	110	38	55	123	53	51	70	110	220	2	290	60	32	42
90	BND 2220	22220K	H320	30	50	400	120	40	65	168	78	63	90	130	255	2.5	320	65	30	35
100	BND 3122	23122K	H3122	40	63	400	150	40	80	171	78	83	93	130	263	2.5	300	80	25	35
	BND 2222	22222K	H322	50	54	440	130	42	73	177	82.5	66.5	94.5	140	280	2.5	350	70	30	35
110	BND 3024	23024K	H3024	20	48	370	110	35	60	146	63	63	83	115	230	2.5	300	60	23	35
	BND 2224	22224K	H3124	58	56	470	140	42	77	183	84	69	99	150	300	2.5	370	75	30	35
115	BND 3026	23026K	H3026	30	50	410	120	38	70	156	68	65	88	130	260	2.5	340	60	23	35
	BND 2226	22226K	H3126	65	57	500	150	45	84	195	95	70	100	160	315	3	400	85	30	40
	BND 3226	23226K	H2326	50	65	500	150	45	100	211	103	78	108	160	315	3	400	85	30	40
125	BND 3028	23028K	H3028	35	53	430	130	40	70	156	68	68	88	140	275	3	360	70	30	35
	BND 2228	22228K	H3128	70	64	530	160	50	88	206	98	78	108	170	345	3	430	85	30	42
	BND 3228	23228K	H2328	65	72	530	160	50	110	226	108	88	118	170	345	3	430	85	30	42
135	BND 3030	23030K	H3030	40	55	455	140	42	80	176	78	71	98	145	290	2	370	80	30	35
	BND 2230	22230K	H3130	85	68	550	170	54	97	213	102	81.5	111.5	180	365	2	450	90	36	45
	BND 3230	23230K	H2330	75	80	550	170	54	120	236	113	93	123	180	365	3	450	90	36	45
140	BND 3032	23032K	H3032HG	45	60	480	150	45	85	181	78	78	103	155	310	2	390	90	30	35
	BND 2232	22232K	H3132HG	100	72	600	180	58	106	227	106	86	121	190	385	3	490	105	36	45
	BND 3232	23232K	H2332HG	90	85	600	180	58	130	251	118	98	133	190	385	3	490	105	36	45
150	BND 3034	23034K	H3034HG	70	65	510	160	50	90	191	83	83	108	165	330	2	420	95	36	45
	BND 3134	23134K	H3134HG	100	90	570	200	55	120	249	113	113	136	190	380	3	470	110	36	45
	BND 2234	22234K	H3134HG	105	77	640	200	62	111	247	116	91	131	200	405	3	525	110	36	45
	BND 2324	23234K	H2334HG	120	88	640	200	62	135	271	128	103	143	200	405	3	525	110	36	45
160	BND 3036	23036K	H3036HG	70	72	540	170	52	100	201	88	88	113	180	360	3	450	100	36	45
	BND 3136	23136K	H3136HG	110	80	600	200	58	125	250	115	105	135	200	395	3	490	105	36	45
	BND 3236	23236K	H2336HG	140	90	680	210	65	140	285	135	110	150	210	425	3	550	120	36	45
170	BND 3038	23038K	H3038HG	80	80	570	180	55	105	211	93	88	118	185	370	3	480	105	36	45
	BND 3138	23138K	H3138HG	125	95	680	210	65	130	266	123	113	143	210	425	3	550	120	36	45
	BND 3238	23238K	H2338HG	170	96	710	220	85	150	291	138	113	153	220	455	3	560	120	36	45
180	BND 3040	23040K	H3040HG	95	74	600	190	60	110	226	98	98	128	200	400	3	510	110	36	45
	BND 3140	23140K	H3140HG	170	100	710	220	85	135	276	128	118	148	220	455	2	560	120	42	52
	BND 3240	23240K	H2340HG	205	100	780	240	75	165	296	138	118	158	235	475	4	640	140	42	52
200	BND 3044	23044K	H3044HG	100	78	640	200	65	115	241	103	103	138	215	430	3	540	115	42	52
	BND 3144	23144K	H3144HG	190	100	780	240	75	150	295	135	125	160	235	475	4	640	140	42	52
	BND 3244	23244K	H2344HG	240	110	850	250	80	175	329	147	132	182	260	525	4	700	140	42	52
220	BND 3048	23048K	H3048HG	130	85	680	210	70	120	251	108	108	143	225	455	4	560	120	42	52
	BND 3148	23148K	H3148HG	280	100	890	250	80	160	334	152	132	182	270	550	4	720	140	42	52
	BND 3248	23248K	H2348HG	330	120	900	250	90	190	256	158	148	198	290	585	5	750	140	42	52
240	BND 3052	23052K	H3052HG	160	87	720	220	75	130	261	113	113	148	250	500	4	600	130	42	52
	BND 3152	23152K	H3152HG	255	110	900	250	90	175	336	151	141	185.5	290	585	4	750	140	42	52
	BND 3252	23252K	H2352HG	380	125	960	290	95	205	275	168	158	207.5	310	625	3	800	160	42	65
260	BND 3056	23056K	H3056HG	180	92	760	240	80	135	281	118	118	163	260	520	4	630	140	42	65
	BND 3156	23156K	H3156HG	335	120	900	250	90	175	351	158	148	193	290	585	4	750	140	42	65
	BND 3256	23256K	H2356HG	490	135	1000	300	100	210	400	180	165	220	320	645	4	840	170	42	65
280	BND 3060	23060K	H3060HG	220	110	820	250	85	140	301	128	133	173	285	570	4	690	150	42	65
	BND 3160	23160K	H3160HG	400	130	1000	300	100	190	385	170	155	215	320	645	4	840	170	42	65
	BND 3260	23260K	H3260HG	570	145	1100	330	105	230	404	182	187	222	350	705	4	920	180	56	75
300	BND 3064	23064K	H3064HG	250	110	860	260	90	150	301	128	133	173	295	590	4	730	160	42	65
	BND 3164	23164K	H3164HG	500	135	1150	350	100	210	395	180	192	215	350	700	4	940	160	42	65
	BND 3264	23264K	H3264HG	600	145	1150	360	115	250	429	192	187	237	370	745	5	960	200	56	75
320	BND 3068	23068K	H3068HG	300	112	900	270	95	160	311	133	143	178	315	630	5	770	170	42	65
	BND 3168	23168K	H3168HG	520	140	1150	360	115	220	445	200	200	245	370	735	4	960	200	56	75
	BND 3268	23268K	H3268HG	755	175	1200	380	125	265	484	212	217	272	390	785	5	980	200	60	75
340	BND 3072	23072K	H3072HG	330	120	960	280	100	170	325	140	150	185	330	660	5	820	180	42	65
	BND 3172	23172K	H3172HG	600	155	1200	370	115	225	450	200	200	250	380	760	4	1000	200	56	75
	BND 3272	23272K	H3272HG	950	185	1280	400	130	275	509	227	222	282	410	820	5	1040	210	72	80
360	BND 3076	23076K	H3076HG	360	123	1000	300	105	160	329	142	152	187	340	680	7	840	190	56	75
	BND 3176	23176K	H3176HG	720	170	1200	380	125	230	459	202	202	257	390	790	5	1000	200	60	75
	BND 3276	23276K	H3276HG	1100	190	1350	405	135	295	529	232	257	297	425	860	5	1100	225	68	85
380	BND 3080	23080K	H3080HG	400	135	1060	320	110	175	351	148	158	203	360	720	7	900	200	56	75
	BND 3180	23180K	H3180HG	750	170	1280	400	130	235	460	200	205	260	410	820	5	1040	210	68	80
400	BND 3084	23084K	H3084HG	435	137	1100	340	115	180	351	148	163	203	375	755	7	940	210	56	75
	BND 3184	23184K	H3184HG	950	190	1350	420	135	260	510	210	230	300	450	900	7	1100	210	68	85





# BND SOLID TYPE HOUSINGS

The BND Solid Type Housings is mainly used with Spherical Roller bearings. They are designed to suit 222, 230, 231 and 232 series bearings with an adapter sleeve. These housings are cast in S.G. Iron Grade 42. WRE manufacture an A and a B type configuration.

Example of the designations:  
BND 3236 KAL/F or KBL/F

BND = Solid Type Bearing Housing  
3236 = Bearing with an Adapter Sleeve 160mm shaft diameter (23236K.C3).  
K = Taper Bearing with an adapter sleeve.  
A = End cover arrangement.  
B = Thru Cover arrangement.  
L = Non Located  
F = Located

WRE manufacture a complete range from a BND 2218 to a BND 3184. Every BND unit is supplied with the following components:

1 x Housing  
1 x Thru or End cover. (Depending on the configuration)  
1 or 2 Labyrinth seals. (Depending on the configuration)  
1 or 2 Spring Rings. (Depending on the configuration)



# BND Solid Type Housings

Special BND units are available on request. WRE also manufacture these units with a taconite sealing arrangement. The units can also be drilled and tapped for any special adjusting equipment that has to be mounted on the housing.

Due to their solid base, non-split construction and being cast out of S.G. Iron Grade 42 they can withstand very high static and dynamic loads in both radial and axial directions.

They are typically used on conveyor drive pulleys, rotating drum support rollers and similar heavy duty machines working in extremely harsh environments.

The complex labyrinth or Taconite seals is fixed onto the shaft by means of the spring ring to ensure that the Labyrinth or taconite seal rotates with the shaft. The rotating seal ring and the fixed cover perform an outstanding sealing function against ingress of dirt and moisture, purging these seals with grease on a regular basis is recommended to keep the dirt ingress out.

Grease nipples are fitted for re-grease purposes. The housing can also be drilled for Temperature and Vibration probe drilling.



## Some useful hints on application of BND Solid Type Bearing Housing assemblies.

### Mounting

Measure the internal clearance in the bearing and reduce to the correct figure by driving up the bearing on the adaptor sleeve. The required final clearance figures are published in most bearing catalogues. WRE laminated clearance reduction charts are available on request.

### Location

Ensure that when two housings are mounted on one shaft only one of the bearings is located in the housing by means of the located cover and that the other is free to move in the housing when thermal expansion or contraction take place in the shaft, to avoid cross location.

### Lubrication

The BND Solid Type Bearing Housing is a grease lubricated housing. Use the correct grease for the application. Over and under lubrication can cause problems with the bearing and ultimately result in bearing failure. Pack the free space within the bearing and housing about two thirds full of grease leaving one third air space to prevent churning and subsequent overheating.

### Sealing

Labyrinth seal is the standard sealing arrangement. Taconite seals will be provided with a mild steel labyrinth and V-Ring seal.



**722 / I-1200 FLANGED • BND SOLID TYPE • SPA / THDS / TH / THM TAKE UP • SN / SSN / SNH / SNU / FSN / SAF / SD / SDAF / SDJC / SDG PLUMMER BLOCKS • TRUNNION MILL / BALL MILL / ROD MILL / PINION / SHEAVE WHEEL / DIFFUSER HEAD SHAFT / SHREDDER / CANE KNIFE / SHAKER SCREEN / DRAGLINE / DAVIDSON HOUSINGS • WFO OIL BATH PLUMMER BLOCK • WRB DUAL FAN GREASE & OIL LUBRICATED / VWRB VERTICAL / MAJAX / DINGLER / CODELCO • TVN HANGER • MANIFOLD SUPPORT • PRE STRESS BOLTS / NUTS & STOOD • OIL INJECTION ADAPTER SLEEVES • TS LABYRINTH / TACONITE SEALS • END DISKS / LOCATING RINGS • HYDRAULIC NUTS / PUMPS & ACCESSORIES • FABRICATION OF HOUSINGS & COMPONENTS • GENERAL ENGINEERING.**

For more information please contact us on:

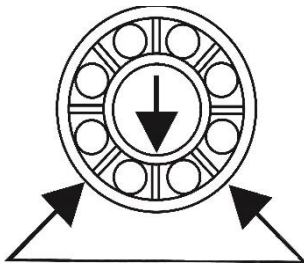
Tel: +27 (0) 11 974 0852

Fax: +27 (0) 11 974 0034

E-mail: [sales@wre-eng.com](mailto:sales@wre-eng.com)

[technical@wre-eng.com](mailto:technical@wre-eng.com)

[www.wre-eng.com](http://www.wre-eng.com)



**wide range engineering**

© Copyright wide range engineering 2015

The contents of this publication are the copyright of the publisher and may not be reproduced (even extracts) unless permission is granted. Every care has been taken to ensure the accuracy of the information contained in this publication but no liability can be accepted for any loss or damage whether direct, indirect or consequential arising out of the use of the information contained herein.

