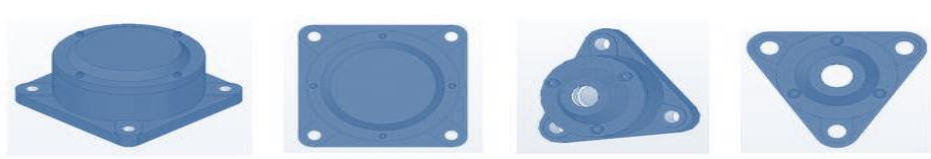
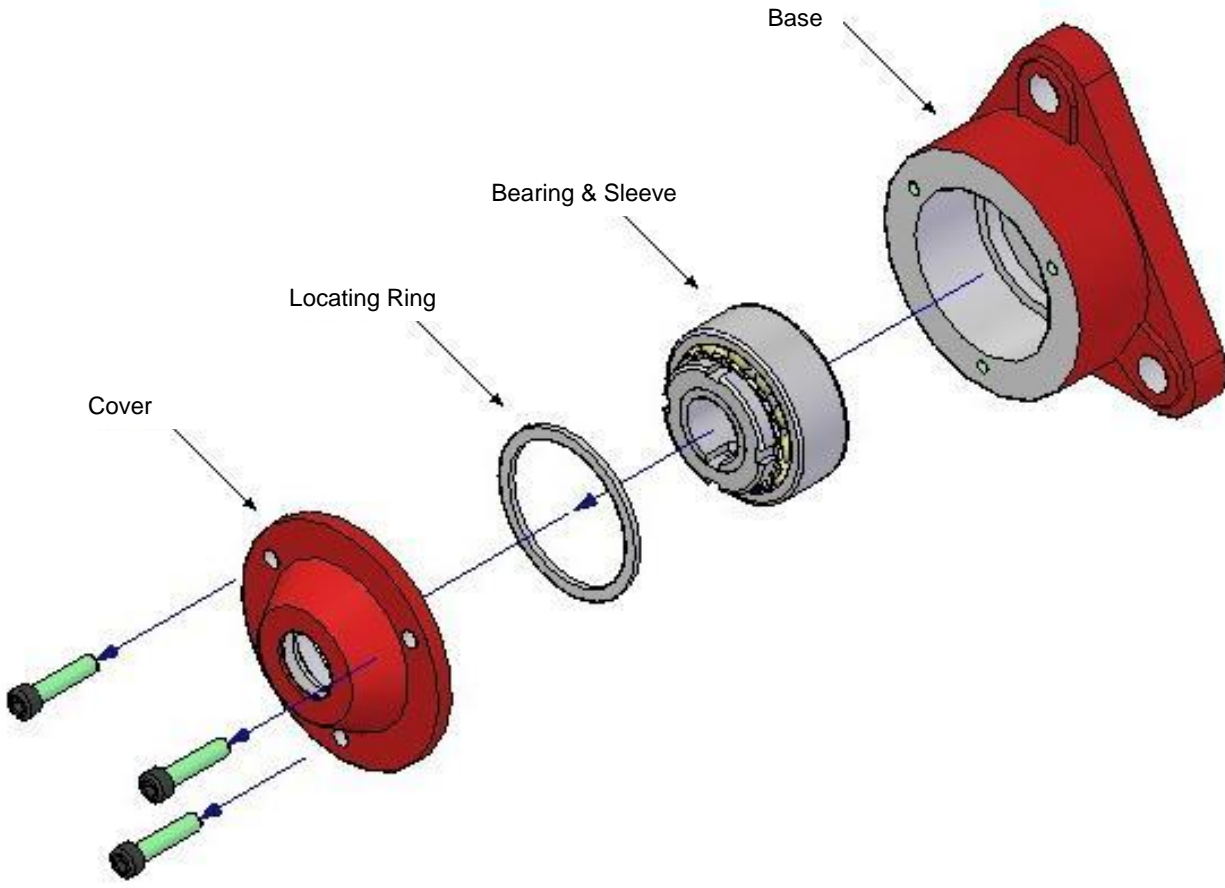
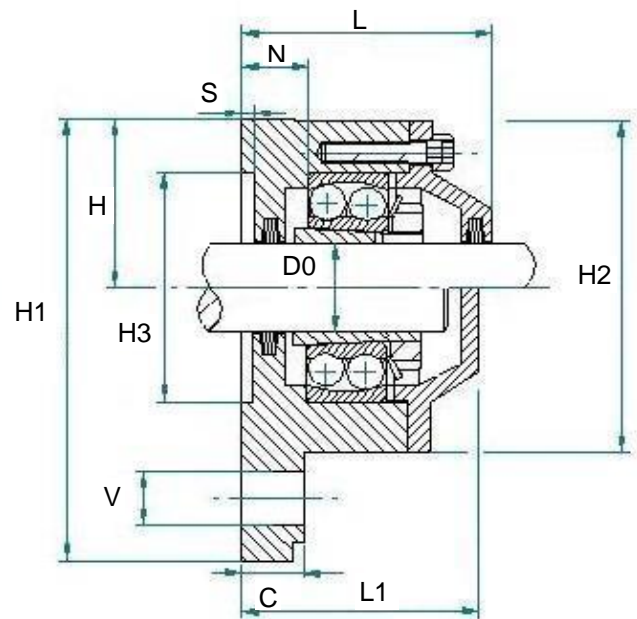
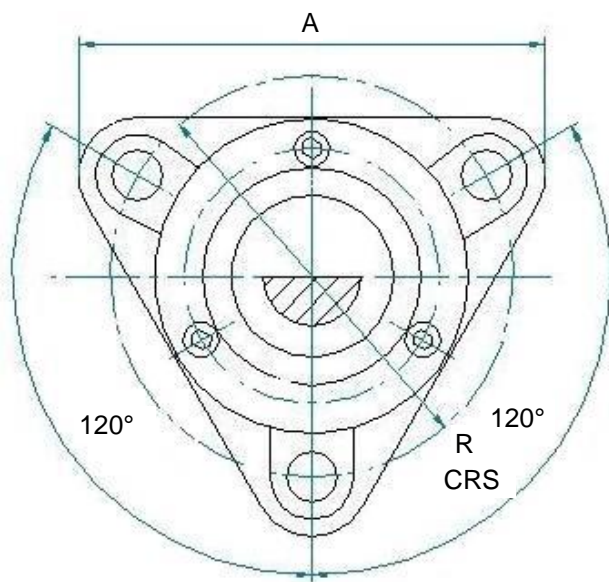


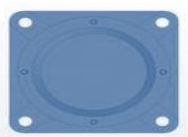
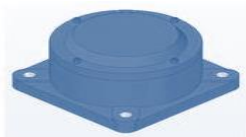


# Triangular Flanged Bearing Housing

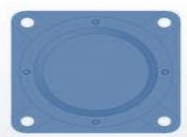
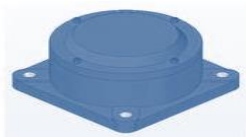
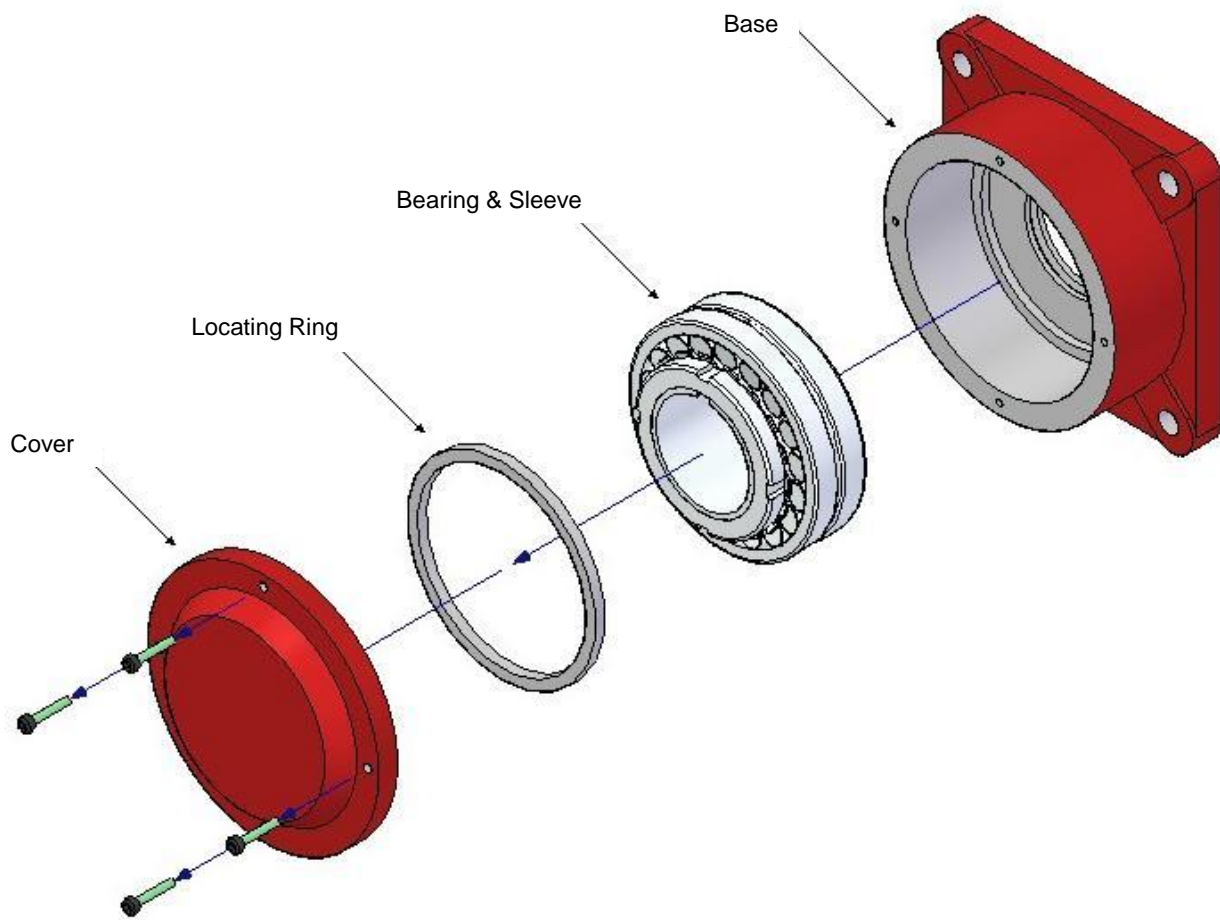


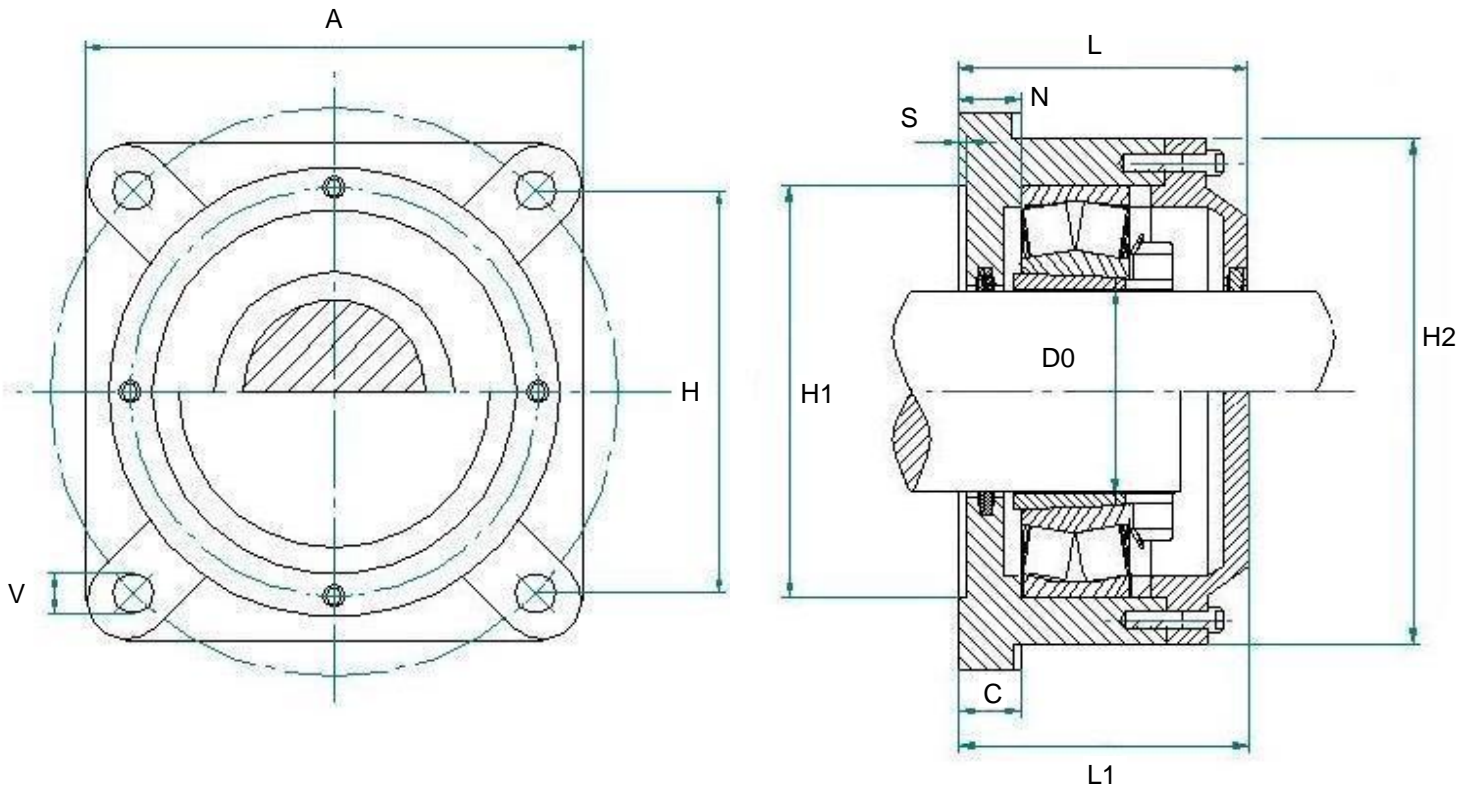


SHAFT D0	Designation	A	H	H1	H2	H3	L	L1	C	N	R	S	V	Bearing & Sleeve	Locating Ring
20	722505	110	38	100	75		50	55	10	17,5	96	3	12	1205 K + H205 2205 K + H305	FRB 5/52 WRE 42 X 52
25	722506	130	44	117	86		55	58	12	19	116	3	12	1206 K + H206 2306 K + H306	FRB 6/62 WRE 50 X 62
30	722507	145	49	130	97		57	61	12	20,5	130	3	14	1207 K + H207 2207 K + H307 22207 K + H307	FRB 8/72 WRE 65 X 72 WRE 65 X 72
35	722508	160	54	143	108		65	67	12	24	140	3	14	1208 K + H208 2208 K + H308 22208 K + H308	FRB 7/80 WRE 70 X 80 WRE 70 X 80
40	722509	180	60	160	113	98	65	70	12	24,5	160	3	14	1209 K + H209 2209 K + H309 22209 K + H309	FRB 6/85 WRE 75 X 85 WRE 75 X 85
45	722510	180	65	172	128	104	72	78	15	25,5	170	3	14	1210 K + H210 2210 K + H310 22210 K + H310	FRB 5/90 WRE 80 X 90 WRE 80 X 90
50	722511	192	65	172	128	104	72	78	15	25,5	170	3	14	1211 K + H211 2211 K + H311 22211 K + H311	FRB 6/100 WRE 85 X 100 WRE 85 X 100
55	722512	210	72	189	142	110	73	78	15	26	180	3	14	1212 K + H312 2212 K + H312 22212 K + H312	FRB 8/110 WRE 90 X 110 WRE 90 X 110
60	722513	225	78	203	152	120	76	82	15	27	190	3	14	1213 K + H213 2213 K + H313 22213 K + H313	FRB 10/120 WRE 2 X 120 WRE 2 X 120

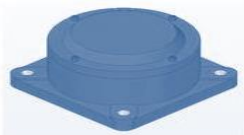


# Square Flanged Bearing Housing





SHAFT D0	Designation	A	H	H1	H2	L	L1	C	N	S	V	Bearing & Sleeve	Locating Ring
65	722515	190	152	145	168	104	104	25	30	4	18	1215 K + H315 2215 K + H315 22215 K + H315	2 X FRB 8/130 1 X FRB 10/130 1 X FRB 10/130
70	722516	196	152	145	176	110	110	25	31	4	18	1216 K + H216 2216 K + H316 22216 K + H316	2 X FRB 9/140 1 X FRB 10/140 1 X FRB 10/140
75	722517	210	170	150	188	114	114	25	31	4	18	1217 K + H217 2217 K + H317 22217 K + H317	2 X FRB 9/150 1 X FRB 10/150 1 X FRB 10/150
80	722518	210	170	150	198	118	118	25	30	4	18	1218 K + H218 2218 K + H318 22218 K + H318	2 X FRB 10/160 1 X FRB 10/160 1 X FRB 10/160
90	722520	250	198	195	224	127	127	30	30	4	22	1220 K + H220 2220 K + H320 22220 K + H320	2 X FRB 11/180 1 X FRB 10/180 1 X FRB 10/180
100	722522	270	219	200	246	137	137	30	30	4	22	1222 K + H222 2222 K + H322 22222 K + H322	2 X FRB 13/200 1 X FRB 10/200 1 X FRB 10/200



# 722 TYPE HOUSINGS

The 722 Flanged bearings housing is mainly use with Self-aligning Ball and Spherical Roller bearings. They are designed to suit 12, 22, and 222 series bearings with an adapter sleeve. These housings are cast in S.G. Iron Grade 42. WRE manufacture an A and a B type configuration.

Example of the designations:

722510 A or B

722 = Flanged Bearing Housing

510 = 45mm shaft dia = (1210K, 2210K or 22210K)

A = End cover arrangement.

B = Thru Cover arrangement with a felt seal.

WRE keep a complete range from a 722505 to 722522 in stock.

Every 722 unit is supplied with the following components:

1 x Housing

1 x Thru or End cover. (Depending on the configuration)

1 or 2 Felt seals. (Depending on the configuration)

1 x Locating Ring.

Special 722 units are available on request. The 722522 is the largest standard unit kept in stock, but we can manufacture any larger size. WRE also manufacture the units with a labyrinth and taconite sealing arrangement.



## Some useful hints on application of flanged bearing housing assembly

### Mounting

Measure the internal clearance in the bearing and reduce to the correct figure by driving up the bearing on the adaptor sleeve. The required final clearance figures are published in most bearing catalogues. WRE laminated clearance reduction charts are available on request.

### Location

Ensure that when two housings are mounted on one shaft only one of the bearings is located in the housing by means of locating rings and that the other is free to move in the housing when thermal expansion or contraction take place in the shaft, to avoid cross location.

### Lubrication

The 722 Flanged Bearing Housing is a grease lubricated housing. Use the correct grease for the application. Over and under lubrication can cause problems with the bearing and ultimately result in bearing failure. Pack the free space within the bearing and housing about two thirds full of grease leaving one third air space to prevent churning and subsequent overheating.

### Sealing

The Felt seals provided might have to be cut to the exact size, then dipped in oil before installation. Labyrinth and Taconite seals will be provided with a mild steel labyrinth, rotary shaft or V-Ring seal.



**722 / I-1200 FLANGED • BND SOLID TYPE • SPA / THDS / TH / THM TAKE UP • SN / SSN / SNH / SNU / FSN / SAF / SD / SDAF / SDJC / SDG PLUMMER BLOCKS • TRUNNION MILL / BALL MILL / ROD MILL / PINION / SHEAVE WHEEL / DIFFUSER HEAD SHAFT / SHREDDER / CANE KNIFE / SHAKER SCREEN / DRAGLINE / DAVIDSON HOUSINGS • WFO OIL BATH PLUMMER BLOCK • WRB DUAL FAN GREASE & OIL LUBRICATED / VWRB VERTICAL / MAJAX / DINGLER / CODELCO • TVN HANGER • MANIFOLD SUPPORT • PRE STRESS BOLTS / NUTS & STUOL • OIL INJECTION ADAPTER SLEEVES • TS LABYRINTH / TACONITE SEALS • END DISKS / LOCATING RINGS • HYDRAULIC NUTS / PUMPS & ACCESSORIES • FABRICATION OF HOUSINGS & COMPONENTS • GENERAL ENGINEERING.**

For more information please contact us on:

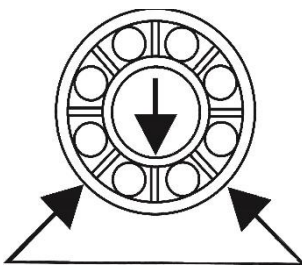
Tel: +27 (0) 11 974 0852

Fax: +27 (0) 11 974 0034

E-mail: [sales@wre-eng.com](mailto:sales@wre-eng.com)

[technical@wre-eng.com](mailto:technical@wre-eng.com)

[www.wre-eng.com](http://www.wre-eng.com)



**wide range engineering**

© Copyright wide range engineering 2015

The contents of this publication are the copyright of the publisher and may not be reproduced (even extracts) unless permission is granted. Every care has been taken to ensure the accuracy of the information contained in this publication but no liability can be accepted for any loss or damage whether direct, indirect or consequential arising out of the use of the information contained herein.

